



ISO Container Inspection Checklist

1 Feb 2023 / EECU322406 / Expert Exporters Co.

Complete

Score	87.67%	Flagged items	9	Actions	3
Site conducted					Unanswered
Shipper					
Expert Exporters Co.					
Country of Origin					United States of America
Container Number					
EECU322406					
Inspected by					Sabrina Diaz
Conducted on					01.02.2023 09:30 PST

Flagged items & Actions

9 flagged, 3 actions

Flagged items

9 flagged, 3 actions

ISO Container Inspection Checklist / Undercarriage

Bottom side rails

Fail



Photo 2

In Progress | Assignee SafetyCulture Staff | Priority Low | Due 10.02.2023 13:21 PST | Created by SafetyCulture Staff

Monitor minor damage

ISO Container Inspection Checklist / Doors

Door fittings

Fail

Monitor minor damage



Photo 5

ISO Container Inspection Checklist / Left Side / Interior

Vertical plate

Fail



Photo 6

To Do | Assignee SafetyCulture Staff | Priority Low | Due 10.02.2023 13:23 PST | Created by SafetyCulture Staff

Repair left side interior panel

ISO Container Inspection Checklist / Left Side / Exterior

Top side rail

Fail

Monitor minor damage

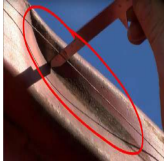


Photo 7

ISO Container Inspection Checklist / Left Side / Exterior

Panel

Fail

Contain small area of corrosion before it spreads



Photo 8

ISO Container Inspection Checklist / Front Wall / Interior

Light leak

Fail

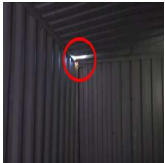


Photo 9

To Do | Assignee SafetyCulture Staff | Priority Low | Due 10.02.2023 13:25 PST | Created by S afetyCulture Staff

Cover roof hole near front wall

ISO Container Inspection Checklist / Floor

Flooring

Fail

Patch this up, make sure no nails are protruding

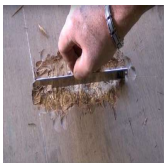


Photo 11

ISO Container Inspection Checklist / Roof

Roof panel

Fail

This is the root cause for roof hole near the front wall. Repair this as well.



Photo 12

ISO Container Inspection Checklist / Roof

Light leaks

Fail

Other actions

0 actions

ISO Container Inspection Checklist

9 flagged, 3 actions, 87.67%

Undercarriage

1 flagged, 1 action, 83.33%

Corner fittings

Pass

Bottom end rails

Pass

Still in good condition.



Photo 1

Bottom side rails

Fail



Photo 2

In Progress | Assignee SafetyCulture Staff | Priority Low | Due 10.02.2023 13:21 PST | Created by SafetyCulture Staff

Monitor minor damage

Door sill

Pass

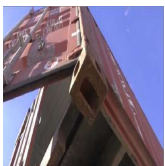


Photo 3

Cross members

Pass

Forklift tunnels

Pass

Doors

1 flagged, 94.12%

ISO identification

Pass

Clearly visible ISO marks and CSC plate



Photo 4

CSC safety approval	Pass
Stencils	Pass
Corner posts	Pass
Corner fittings	Pass
Door header	Pass
Door sill	Pass
Door fittings	Fail

Monitor minor damage



Photo 5

Door lining	Pass
Door gaskets	Pass
Rods	Pass
Rod retainers	Pass
Cams	Pass
Cam retainers	Pass
J-bars	Pass
Rain guttering	Pass
Placard holder	Pass

Left Side

3 flagged, 1 action, 76.92%

Interior

1 flagged, 1 action, 80%

Plywood lining

Pass

Kick rail

Pass

Vertical plate

Fail



Photo 6

To Do | Assignee SafetyCulture Staff | Priority Low | Due 10.02.2023 13:23 PST | Created by SafetyCulture Staff

Repair left side interior panel

Horizontal rail

Pass

Light leak

Pass

Exterior

2 flagged, 75%

ISO identification

Pass

Corner fittings

Pass

Corner posts

Pass

Top side rail

Fail

Monitor minor damage

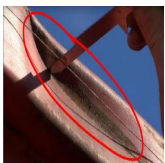


Photo 7

Bottom side rail

Pass

Forklift pockets

Pass

Panel

Fail

Contain small area of corrosion before it spreads



Photo 8

Placard holder	Pass
Front Wall	1 flagged, 1 action, 90.91%
Interior	1 flagged, 1 action, 75%
Plywood lining	Pass
Kick plate	Pass
Load bearing surfaces	Pass
Light leak	Fail

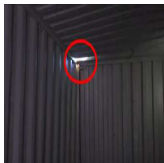


Photo 9

To Do | Assignee SafetyCulture Staff | Priority Low | Due 10.02.2023 13:25 PST | Created by SafetyCulture Staff

Cover roof hole near front wall

Exterior	100%
ISO identification	Pass
Corner fittings	Pass
Corner posts	Pass
Top end rail	Pass
Bottom end rail	Pass
Panel	Pass
Placard holder	Pass

Right Side 100%

Interior

100%

Plywood lining	Pass
Kick rail	Pass
Vertical plate	Pass
Horizontal rail	Pass
Light leak	Pass

Exterior

100%

ISO identification	Pass
Corner fittings	Pass
Corner posts	Pass
Top side rail	Pass
Bottom side rail	Pass
Forklift pockets	Pass
Panel	Pass

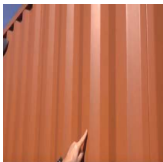


Photo 10

Placard holder

Pass

Floor

1 flagged, 80%

Flooring

Fail

Patch this up, make sure no nails are protruding

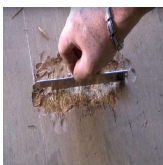


Photo 11

Floor fasteners	Pass
Threshold plate	Pass
Tie-down devices	Pass
Light leaks	Pass

Roof

2 flagged, 75%

ISO identification	Pass
Corner fittings	Pass
Corner posts	Pass
Top end rail	Pass
Bottom end rail	Pass
Roof panel	Fail

This is the root cause for roof hole near the front wall. Repair this as well.



Photo 12

Roof bows	Pass
Light leaks	Fail

Sign off

I have visually verified to the best of my ability the condition of the container as noted above and found that the container is structurally sound, weather tight, has no false compartments, contains no un-manifested material and the locking mechanisms are in good order.

Additional Recommendations

We should keep on using iAuditor so we can easily identify damages, maximize utilisation of our shipping containers and prevent container fires. Monitor all minor damages and repair roof hole and left side interior panel.

Name & Signature of Inspector



Sabrina Diaz
03.02.2023 13:27 PST

Appendix



Photo 1



Photo 2



Photo 3



Photo 4



Photo 5



Photo 6

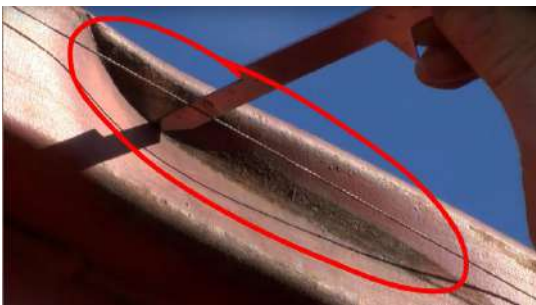


Photo 7



Photo 8



Photo 9



Photo 10



Photo 11



Photo 12